

Colchester School Board

Meeting Agenda and Packet

July 17, 2018

**Colchester School District
Board of Education Meeting Agenda
Colchester High School – Media Center
July 17, 2018
7:00 PM**

AGENDA

- | | |
|--|--------------------|
| I. Call to Order and Pledge of Allegiance | |
| II. Citizens Participation* | |
| III. CHS Trip to France | Information |
| IV. Purchase of Maintenance Truck | Action |
| V. Blakely and Laker Lane Intersection Project | Information |
| VI. Approval of Third Reading of Student Conduct and Discipline Policy | Action |
| VII. Approval of Third Reading of Student Suspension Policy | Action |
| VIII. Approval of Second Reading of School Search and Seizure Policy | Action |
| IX. Approval of Personnel Consent Agenda | Action |
| X. Approval of Minutes: June 19, 2018 | Action |
| XI. Board/Administration Communication, Correspondence, Committee Reports | Information |
| XII. Possible Future Agenda Items | Information |
| XIII. Adjournment | |

On The Third Tuesday of Each Month*

During the meeting, the school board will review the top questions and themes submitted to them via email to SchoolBoard@colchestersd.org. Note: All submissions must be received before noon on the third Tuesday of every month.

Voyage en France

CHS French 5, April 2019
(9 days)



Jennifer Loiseau

- Full-time French teacher at CHS, currently teaching levels 3, 4, & 5
- Lived in Grenoble, France with husband and two daughters for 2 years from 2008-2010
- Lived in Montpellier, France during Junior Year of college and for 3 years after graduation.



Prior CHS field trips



April 2015-2018 - Organized and chaperoned four separate one-day trips to Montreal for over 45 French 3 and French 4 students, fellow French teacher, and parent chaperones.


April 2017 - Organized and chaperoned a four-day (3 night) trip to Quebec City for 8 students and a fellow teacher chaperone.

Itinerary (specific dates and scheduling of activities are tentative)

Day 1 Thursday, April 18 - Depart CHS for Montreal. Flight from Montreal to Paris.


Day 2 Friday, April 19 - Arrival in Paris. Take a guided bus city tour with escort, finishing at hotel. After, checking in and a short rest, explore the Ile de la Cité, the island in the middle of the Seine which was the birthplace for Paris. Then a visit of the Sainte-Chapelle and it's stained glass windows before the cathedral of Notre Dame. Stroll over the the Left Bank and visit the back streets of the Quartier Latin, known as the student quarter of Paris. Evening dinner for the group will be arranged.





Day 3 Saturday, April 20 - Take the morning train to Louis XIV's Château de Versailles. Enjoy a tour of this splendid structure, including the Hall of Mirrors, as well as a walk around the gardens to see the fountains and the Grand and Petit Trianon. In the afternoon, return to Paris for a scenic ride on the Seine River with the Bateaux Mouches. Dinner and a show in Paris.

Day 4 Sunday, April 21 - After breakfast, head to the Musée d'Orsay. There we will view paintings from Pre-Impressionist, Impressionist and Post-Impressionist painters including Manet, Cezanne, Renoir, Van Gogh and Lautrec. Afternoon visit of the Rodin Museum. Auguste Rodin was the father of modern sculpture including The Kiss, The Thinker, and others. Then a visit of Montmartre, famous for its portrait artists on the Place des Tertres and Sacré Coeur, a beautiful basilica overlooking the city. Dinner this evening in the Montmartre area.



Day 5 Monday, April 22 - After breakfast at a café, take a walk through the center court of the Louvre Museum to view I.M. Pei's glass pyramid and then through the Luxembourg Palace gardens for a game of pétanque. Rejoin the Place de la Concorde, stroll on the Champs Elysées and visit the Arc de Triomphe. Depart Paris on the TGV (rapid train) to Aix-en-Provence, late arrival and check into hotel for the evening.

Day 6 Tuesday, April 23 - Morning guided tour of Aix to discover the Provincial feel of the markets and fountains in the South of France. Shops, museums and more await as we enjoy the warmer climate and change of scenery. Dinner and evening activity.

Day 7 Wednesday, April 24 - Day trip to coastal city (Cassis or Saint-Tropez) for organized tours of the coast and a moment to relax on the Mediterranean.

Day 8 Thursday, April 25 - Day trip through the Parc du Luberon with a stop in Les Baux de Provence, a beautiful provincial village and then on to the Pont du Gard to discover the ancient Roman Aqueduct. Dinner on the way back to Aix.

Day 9 Friday, April 26 - Transfer to the airport in Marseilles for the transatlantic flight home. Arrival very late in Montreal and then at CHS.



Rationale

- The unique set of higher-level thinking skills that language classes encourage largely involve the comparisons that the students are able to make between their own language and culture and those they are studying. The possibility of a culminating trip to France for students of French 5 is most desirable and valuable, allowing them to further experience and consolidate their learning through immersion as invested actors, rather than casual observers.
- Not only does the trip help to justify their own work in class, it also helps to encourage the persistence and model the rewards of this work for others. This first hand interaction with the language and one of the cultures they've studied builds a bridge between their years of investment in difficult elective courses and the observations and lifelong memories they will use to create their own personal awareness and understanding of communication, of others, and of themselves.

Today's student

More and more often, our students are gravitating to visual and social sharing of what matters most to them. I firmly believe that rather than brushing off their priorities and habits as nonsense, we should seek to integrate what they find to be valuable and current into their learning experiences. This legitimizes their studies in their eyes and motivates them towards engagement and success. Furthermore, it is through experiential learning that we can lift their heads out of their everyday “language” and provide insight about what lies beyond.

One's destination
is never a place,
but always a new
way of seeing
things.

- *Henry Miller*

Eligible students

This rewarding trip would be an option for any student enrolled in French 5 during the 2018-2019 school year.

With around 20 students currently enrolled, I estimate that 15 to 18 students could potentially end up attending. This would be an ideal group size and would require another CHS chaperone in attendance.

In the case of too few students for cost effectiveness, the trip could be opened to CHS students who had completed the French 4 level, yet could not take French 5 due to scheduling conflicts.



Educational Travel Service (ETS), South Burlington, VT

- operated by experienced, highly successful, local travel consultants who have run trips for South Burlington, Champlain Valley, Essex and Woodstock high schools among others.
- custom planned and flexible trips (not pre-packaged) with private transportation for short journeys; superior, centrally-located hotels; locally-appreciated restaurants; and an emphasis on unique, hands-on cultural experiences [see website for reviews]
- quick and satisfying resolution of conflicts, cancellations, and other in-trip changes necessitating a “Plan B,” thanks to contacts France and the US who can be contacted 24/7..
- trip insurance for students (\$150 fee) and liability insurance for trained ETS escorts and operators.



Timeline for trip preparation



May-June 2018 Publicize trip, hold informational meeting for students and families.

June 2018 just after exams Confirm with interested students and set in motion the required documentation, payments, plans for fundraising.

September 2018-March 2019 Monthly informational and planning meetings during ATs for students and family newsletters sent home.

Early April 2019 Meeting with family and students concerning final details and expectations.


COLCHESTER SCHOOL DISTRICT



Amy Minor, Superintendent of Schools
George A. Trieb, Jr., Business Manager
Carrie A. Lutz, Director of Special Education
Gwendolyn Carmolli, Director of Curriculum
Internet Address: www.csdvt.org

Administrative Offices, 125 Laker Lane • P.O. Box 27, Colchester, VT 05446-0027 • Phone (802) 264-5999 • Fax (802) 863-4774

MEMO

To: School Board Directors
From: George A. Trieb, Jr. 
Subject: Purchase of Maintenance Vehicle
Date: July 12, 2018

The purpose of this memorandum is to receive school board approval for the purchase of a new truck for the maintenance department.

The district currently has five (5) maintenance vehicles (see table below). The vehicle we are looking to purchase is very similar to the existing trucks except that it has a nine-foot dump body on it. The truck we are looking to replace is of similar make but will no longer pass inspection and has been idle for several months. It is a 2004 with 62,157 miles on it. The district will sell the existing truck.

Year	Make	Model	Mileage
2004	Chevy	3500/Flatbed	62,157
2011	Chevy	3500	51,262
2015	Chevy	3500	27,471
2016	Chevy	2500	19,403
2017	Chevy	3500	7,491

The district received a bid from Shearer Chevrolet of \$30,032 for a new Chevy 2019 3500 HD. The quote from Shearer Chevrolet is based on state bid, and therefore, we are not obligated to obtain three bids. Iroquois Manufacturing will install the dump body and the plow for this vehicle bringing the total price to \$43,256. This is a planned and budgeted purchase.

I recommend purchasing the Chevy Silverado 3500 HD from Shearer, as we have done in the past. The district continues to have an excellent relationship with this dealer as does the town.

An appropriate motion would be: ***“I move that we approve the purchase of a new maintenance truck as recommended and to authorize the Business and Operations Manager to execute the necessary documents to make this happen.”***



Shearer Chevrolet

Chuck Williams | 802-651-0238 | chuck@shearervt.com

COLCHESTER SCHOOL

[Fleet] 2019 Chevrolet Silverado 3500HD (CK36003) 4WD Reg Cab 137.5" WB, 59.06" CA

FLEET PRICE - 30032.00 GAS

FLEET PRICE - 38300.00 DIESEL

ADD ILLINOIS QUOTE



Shearer Chevrolet

Chuck Williams | 802-651-0238 | chuck@shearervt.com

COLCHESTER SCHOOL

[Fleet] 2019 Chevrolet Silverado 3500HD (CK36003) 4WD Reg Cab 137.5" WB, 59.06" CA

Price Summary

PRICE SUMMARY		MSRP
Base Price		\$37,800.00
Total Options		\$1,550.00
Vehicle Subtotal		\$39,350.00
Adjustments		\$0.00
Destination Charge		\$1,495.00
Grand Total		\$40,845.00

Selected Model and Options

MODEL		
CODE	MODEL	MSRP
CK36003	2019 Chevrolet Silverado 3500HD 4WD Reg Cab 137.5" WB, 59.06" CA WT	\$37,800.00

COLORS		
CODE	DESCRIPTION	MSRP
G7C	Red Hot	\$0.00

PREFERRED EQUIPMENT GROUP		
CODE	DESCRIPTION	MSRP
1WT	Work Truck Preferred Equipment Group includes Standard Equipment	\$0.00



Shearer Chevrolet

Chuck Williams | 802-651-0238 | chuck@shearervt.com

[Fleet] 2019 Chevrolet Silverado 3500HD (CK36003) 4WD Reg Cab 137.5" WB, 59.06" CA

ADDITIONAL EQUIPMENT - INTERIOR

CODE	DESCRIPTION	MSRP
A31	Windows, power with driver express up and down and express down on all other windows (On Regular Cab, Included and only available with (PCR) WT Convenience Package.)	Inc.
AQQ	Remote Keyless Entry (Included and only available with (PCR) WT Convenience Package.)	Inc.
DD8	Mirror, inside rearview auto-dimming (Included and only available with (PCR) WT Convenience Package.)	Inc.

ADDITIONAL EQUIPMENT - EXTERIOR

CODE	DESCRIPTION	MSRP
DPN	Mirrors, outside heated power-adjustable vertical trailing, upper glass, manual-folding and extending, black. Includes integrated turn signal indicators consisting of 51 square inch flat mirror surface positioned over a 24.5 square inch convex mirror surface with a common head and lower convex spotter glass (convex glass is not heated and not power adjustable) and addition of Auxiliary cargo lamp for backing up (helps to see trailer when backing up with a trailer) and amber auxiliary clearance lamp (Included and only available with (PCR) WT Convenience Package and includes (DD8) auto-dimming inside rearview mirror.)	Inc.
NZZ	Underbody Shield frame-mounted shields, includes front underbody shield starting behind front bumper and running to first cross-member, protecting front underbody, oil pan, differential case and transfer case (Included with (VYU) Snow Plow Prep Package. Available on CK****3 models only.)	Inc.
TRW	Provision for cab roof-mounted lamp/beacon provides an instrument panel-mounted switch and electrical wiring tucked beneath the headliner for a body upfitter to connect a body-mounted warning or emergency lamp (Included with (VYU) Snow Plow Prep Package.)	Inc.

This document contains information considered Confidential between GM and its Clients uniquely. The information provided is not intended for public disclosure. Prices, specifications, and availability are subject to change without notice, and do not include certain fees, taxes and charges that may be required by law or vary by manufacturer or region. Performance figures are guidelines only, and actual performance may vary. Photos may not represent actual vehicles or exact configurations. Content based on report preparer's input is subject to the accuracy of the input provided.

Data Version: 8032. Data Updated: Jul 9, 2018 7:49:00 AM PDT.



Shearer Chevrolet

Chuck Williams | 802-651-0238 | chuck@shearervt.com

[Fleet] 2019 Chevrolet Silverado 3500HD (CK36003) 4WD Reg Cab 137.5" WB, 59.06" CA

ADDITIONAL EQUIPMENT - MECHANICAL

CODE	DESCRIPTION	MSRP
JL1	Trailer brake controller, integrated	\$275.00
KW5	Alternator, 220 amps (Included with (VYU) Snow Plow Prep Package when ordered with gas or diesel engines.)	Inc.

ADDITIONAL EQUIPMENT - PACKAGE

CODE	DESCRIPTION	MSRP
PCR	WT Convenience Package includes (DPN) outside heated power-adjustable vertical camper mirrors, (DD8) inside rearview auto-dimming mirror and (AQQ) Remote Keyless Entry; Regular Cab also includes (A31) power windows.	\$890.00
VYU	Snow Plow Prep Package includes power feed for backup and roof emergency light, (KW5) 220-amp alternator with gas or diesel engine, forward lamp wiring harness, (TRW) provision for cab roof mounted lamp/beacon, (NZZ) underbody shield and Heavy Duty front-springs (Only available on 4WD models. Upgradeable to (KHB) dual, 150 amps and 220 amps each alternators with (L5P) Duramax 6.6L Turbo-Diesel V8 engine)	\$385.00

SEAT TYPE

CODE	DESCRIPTION	MSRP
AE7	Seats, front 40/20/40 split-bench 3-passenger, driver and front passenger recline with outboard head restraints and center fold-down armrest with storage. Vinyl has fixed lumbar and cloth has manually adjustable driver lumbar. (STD)	\$0.00

PAINT

CODE	DESCRIPTION	MSRP
G7C	Red Hot	\$0.00

This document contains information considered Confidential between GM and its Clients uniquely. The information provided is not intended for public disclosure. Prices, specifications, and availability are subject to change without notice, and do not include certain fees, taxes and charges that may be required by law or vary by manufacturer or region. Performance figures are guidelines only, and actual performance may vary. Photos may not represent actual vehicles or exact configurations. Content based on report preparer's input is subject to the accuracy of the input provided.

Data Version: 6032. Data Updated: Jul 9, 2018 7:49:00 AM PDT.



Shearer Chevrolet

Chuck Williams | 802-651-0238 | chuck@shearervt.com

[Fleet] 2019 Chevrolet Silverado 3500HD (CK36003) 4WD Reg Cab 137.5" WB, 59.06" CA

AXLE

CODE	DESCRIPTION	MSRP
GT5	Rear axle, 4.10 ratio (Requires (L96) Vortec 6.0L V8 SFI engine or (LC8) 6.0L V8 SFI Gaseous CNG/LPG capable engine.)	\$0.00

SEAT TRIM

CODE	DESCRIPTION	MSRP
H2Q	Dark Ash, Vinyl Includes fixed driver lumbar and Jet Black interior accents	\$0.00

RADIO

CODE	DESCRIPTION	MSRP
IOB	Audio system, Chevrolet Infotainment System with 7" diagonal color touch-screen, AM/FM stereo with seek-and-scan and digital clock, includes Bluetooth streaming audio for music and select phones.	\$0.00

ENGINE

CODE	DESCRIPTION	MSRP
L96	Engine, Vortec 6.0L Variable Valve Timing V8 SFI (360 hp [268.4 kW] @ 5400 rpm, 380 lb-ft of torque [515.0 N-m] @ 4200 rpm) (STD)	\$0.00

TRANSMISSION

CODE	DESCRIPTION	MSRP
MYD	Transmission, 6-speed automatic, heavy-duty electronically controlled with overdrive and tow/haul mode. Includes Cruise Grade Braking and Powertrain Grade Braking (STD) (Requires (L96) Vortec 6.0L V8 SFI engine or (LC8) 6.0L V8 SFI Gaseous CNG/LPG capable engine.)	\$0.00

EMISSIONS

CODE	DESCRIPTION	MSRP
NE1	Emissions, Connecticut, Delaware, Maine, Maryland, Massachusetts, New Jersey, New York, Oregon, Pennsylvania, Rhode Island, Vermont and Washington state requirements	\$0.00

This document contains information considered Confidential between GM and its Clients uniquely. The information provided is not intended for public disclosure. Prices, specifications, and availability are subject to change without notice, and do not include certain fees, taxes and charges that may be required by law or vary by manufacturer or region. Performance figures are guidelines only, and actual performance may vary. Photos may not represent actual vehicles or exact configurations. Content based on report preparer's input is subject to the accuracy of the input provided.

Data Version: 6032. Data Updated: Jul 9, 2018 7:49:00 AM PDT.



Shearer Chevrolet

Chuck Williams | 802-651-0238 | chuck@shearervt.com

[Fleet] 2019 Chevrolet Silverado 3500HD (CK36003) 4WD Reg Cab 137.5" WB, 59.06" CA

TIRES

CODE	DESCRIPTION	MSRP
QQO	Tires, LT235/80R17E all-season highway (STD)	\$0.00

PAINT SCHEME

CODE	DESCRIPTION	MSRP
ZY1	Paint, solid (STD)	\$0.00

Options Total **\$1,550.00**

Standard Equipment

Mechanical

Engine, Vortec 6.0L Variable Valve Timing V8 SFI (360 hp [268.4 kW] @ 5400 rpm, 380 lb-ft of torque [515.0 N-m] @ 4200 rpm) (STD)

Transmission, 6-speed automatic, heavy-duty electronically controlled with overdrive and tow/haul mode. Includes Cruise Grade Braking and Powertrain Grade Braking (STD) (Requires (L96) Vortec 6.0L V8 SFI engine or (LC8) 6.0L V8 SFI Gaseous CNG/LPG capable engine.)

Rear axle, 4.10 ratio (Requires (L96) Vortec 6.0L V8 SFI engine or (LC8) 6.0L V8 SFI Gaseous CNG/LPG capable engine.)

Differential, heavy-duty locking rear

Air cleaner, high-capacity

Transfer case, with floor-mounted shifter (Included with 4WD models only.)

Four wheel drive

Cooling, external engine oil cooler

Cooling, auxiliary external transmission oil cooler

Battery, heavy-duty 720 cold-cranking amps/80 Amp-hr, maintenance-free with rundown protection and retained accessory power

Alternator, 150 amps

Recovery hooks, front, frame-mounted, black

Body, Chassis Cab

Frame, fully-boxed, hydroformed front section

GVWR, 13,200 lbs. (5988 kg)

Suspension Package, Standard includes 51mm twin tube shock absorbers and 33mm front stabilizer bar

Steering, Recirculating Ball with smart flow power steering system

Fuel tank, front and rear, 63.5 gallon

This document contains information considered Confidential between GM and its Clients uniquely. The information provided is not intended for public disclosure. Prices, specifications, and availability are subject to change without notice, and do not include certain fees, taxes and charges that may be required by law or vary by manufacturer or region. Performance figures are guidelines only, and actual performance may vary. Photos may not represent actual vehicles or exact configurations. Content based on report preparer's input is subject to the accuracy of the input provided.

Data Version: 6032. Data Updated: Jul 9, 2018 7:49:00 AM PDT.



Shearer Chevrolet

Chuck Williams | 802-651-0238 | chuck@shearervt.com

[Fleet] 2019 Chevrolet Silverado 3500HD (CK36003) 4WD Reg Cab 137.5" WB, 59.06" CA

Mechanical

- Capped Fuel Fill
- Exhaust, aluminized stainless-steel muffler and tailpipe
- Back-up alarm calibration This calibration will allow installation of an aftermarket back up alarm.

Exterior

- Wheels, 17" (43.2 cm) painted steel
- Tires, LT235/80R17E all-season highway (STD)
- Wheel trim, painted trim skins and painted center caps
- Bumper, front chrome
- Grille, chrome with chrome mesh insert
- Grille surround, chrome
- Headlamps, halogen projector-beam
- Lamps, Smoked Amber roof marker
- Lamps, cargo area, cab mounted with switch on center switch bank
- Mirrors, outside high-visibility vertical camper-style, Black with manual folding and extension and lower convex spotter glass
- Glass, solar absorbing, tinted
- Door handles, Black

Entertainment

- Audio system, Chevrolet Infotainment System with 7" diagonal color touch-screen, AM/FM stereo with seek-and-scan and digital clock, includes Bluetooth streaming audio for music and select phones.
- 6-speaker audio system
- Bluetooth for phone, personal cell phone connectivity to vehicle audio system

Interior

- Seats, front 40/20/40 split-bench 3-passenger, driver and front passenger recline with outboard head restraints and center fold-down armrest with storage. Vinyl has fixed lumbar and cloth has manually adjustable driver lumbar. (STD)
- Seat trim, Vinyl
- Floor covering, Graphite-colored rubberized-vinyl
- Steering column, manual Tilt-Wheel
- Steering wheel
- Instrumentation 6-gauge cluster featuring speedometer, fuel level, engine temperature, tachometer, voltage and oil pressure

This document contains information considered Confidential between GM and its Clients uniquely. The information provided is not intended for public disclosure. Prices, specifications, and availability are subject to change without notice, and do not include certain fees, taxes and charges that may be required by law or vary by manufacturer or region. Performance figures are guidelines only, and actual performance may vary. Photos may not represent actual vehicles or exact configurations. Content based on report preparer's input is subject to the accuracy of the input provided.

Data Version: 6032. Data Updated: Jul 9, 2018 7:49:00 AM PDT.



Shearer Chevrolet

Chuck Williams | 802-651-0238 | chuck@shearervt.com

{Fleet} 2019 Chevrolet Silverado 3500HD (CK36003) 4WD Reg Cab 137.5" WB, 59.06" CA

Interior

Driver Information Center 3.5-inch diagonal monochromatic display, provides warning messages and basic vehicle information

Door locks, power

Cruise control, steering wheel-mounted

Air conditioning, single-zone

Assist handle, front passenger and driver on A-pillars

Safety-Mechanical

Brakes, 4-wheel antilock, 4-wheel disc with dual rear wheel with DuraLife brake rotors

StabiliTrak, stability control system with Proactive Roll Avoidance and traction control, includes electronic trailer sway control and hill start assist

Safety-Exterior

Daytime Running Lamps with automatic exterior lamp control

Safety-Interior

Air bags, frontal, driver and right front passenger (Always use seat belts and child restraints. Children are safer when properly secured in a rear seat in the appropriate child restraint. See the Owner's Manual for more information.)

Air bag deactivation switch, frontal passenger-side (Included and only available with Regular Cab models.)

Teen Driver mode a configurable feature that lets you activate customizable vehicle settings associated with a key fob, to encourage safe driving behavior. It can limit certain vehicle features, and it prevents certain safety systems from being turned off. An in-vehicle report gives you information on your teen's driving habits and helps you to continue to coach your new driver

WARRANTY

Warranty Note: <<< Preliminary 2019 Warranty Note >>>

Basic Years: 3

Basic Miles/km: 36,000

Drivetrain Years: 5

Drivetrain Miles/km: 60,000

Drivetrain Note: HD Duramax Diesel: 5 Years/100,000 Miles; Qualified Fleet Purchases: 5 Years/100,000 Miles

Corrosion Years (Rust-Through): 6

Corrosion Years: 3

Corrosion Miles/km (Rust-Through): 100,000

Corrosion Miles/km: 36,000

Roadside Assistance Years: 5

Roadside Assistance Miles/km: 60,000

Roadside Assistance Note: HD Duramax Diesel: 5 Years/100,000 Miles; Qualified Fleet Purchases: 5 Years/100,000 Miles

Maintenance Note: 1 Year/1 Visit

This document contains information considered Confidential between GM and its Clients uniquely. The information provided is not intended for public disclosure. Prices, specifications, and availability are subject to change without notice, and do not include certain fees, taxes and charges that may be required by law or vary by manufacturer or region. Performance figures are guidelines only, and actual performance may vary. Photos may not represent actual vehicles or exact configurations. Content based on report preparer's input is subject to the accuracy of the input provided.

Data Version: 6032. Data Updated: Jul 9, 2018 7:49:00 AM PDT



596 RICHMOND ROAD
HINESBURG, VERMONT 05461
(802) 482-2155
FAX (802) 482-2962

QUOTATION

TRUCK BODIES SALES & SERVICE

- Dump Bodies (Steel & Stainless)
- Stake/Platform Bodies (Steel & Aluminum)
- Forestry - Chip Bodies
- Custom Bodies • Tool Boxes
- Conversion Hoists
- Product Documentation & Layout

NO. 14302



COLCHESTER SCHOOL DISTRICT
P.O. BOX 27
COLCHESTER, VT 05446

MAKE & MODEL:	
CHEVROLET 3500 / DODGE 3500 / FORD F-350	
COLOR:	C.A.:
BLACK	60" DRW
TRANSMISSION:	

THANK YOU FOR YOUR INQUIRY. WE ARE PLEASED TO OFFER THE FOLLOWING PROPOSAL.				
DATE	CUSTOMER PHONE #	YOUR INQUIRY NO. & DATE	F.O.B.	TERMS
07/10/2018	(802) 655-2699		HINESBURG, VT	NET 30
QUANTITY	DESCRIPTION		UNIT PRICE	AMOUNT
1	IROQUOIS BRAVE DUMP BODY ✓ 9 FT. LONG, 7 FT. WIDE 10 GA. STEEL FLOOR, SIDES AND FRONT 12 GA. STEEL "DOUBLE-PANEL" TAILGATE 3" STRUCTURAL CHANNEL CROSSMEMBERS 4" STRUCTURAL CHANNEL LONGSILLS 12" HIGH SIDES, 2.5 CU. YARDS 18" HIGH SLANTED TAILGATE, 3.5 CU. YARDS PRO-LATCH TAILGATE RELEASE SYSTEM 1/4 CAB PROTECTOR - 2/3 YD SCREEN WINDOW TWO (2) INTERMEDIATE SIDE POSTS, ONE (1) FRONT POST BOXED TOP RAIL DIRT SHEDDING RAILS L.E.D CLEARANCE LIGHTS AND REFLECTORS BODY SANDBLASTED PAINTED BLACK & FULLY UNDERCOATED ONE(1) PAIR OF POLY FENDERS WITH DUMP BODY BRACKETS ONE(1) PAIR OF REAR MUD FLAPS IROQUOIS HOIST MODEL 4250, SINGLE-ACTING, FULL LENGTH SUBFRAME, SAFETY BRACE, 12V ELEC OPERATED W/ CAB CONTROLS & COMPLETE MOUNTING KIT HITCH PLATE WITH RECEVIER TUBE ONLY, TWO(2) SAFETY LASHING RINGS & SEVEN POLE TRAILER PLUG ** INSTALLED			\$ 7,589.00
OPTIONS:				

NO. 14302

QUANTITY	DESCRIPTION	UNIT PRICE	AMOUNT
	MANUAL TARP SYSTEM WITH MESH COVER AND REAR ROLLER BAR INSTALLED ADD.....		\$ 380.00
	FISHER 9'FT HD2 MINUTE MOUNT 2 SNOW PLOW COMPLETE WITH CUTTING EDGE, PLOW LIGHTS, PLOW GUIDES YOUR CHOICE OF PLOW CONTROL, 12 VOLT ELECTRIC HYDRAULIC OPERATED INSTALLED ADD.....		\$ 4,999.00
	FISHER 9'6" XV2 MINUTE MOUNT 2 X-TREME V-PLOW COMPLETE WITH CUTTING EDGE, PLOW LIGHTS, PLOW GUIDES, YOUR CHOICE OF PLOW CONTROL, 12 VOLT ELECTRIC HYDRAULIC OPERATED INSTALLED ADD.....		\$ 5,635.00

If you require any additional information, please contact us.
Quotation subject to change without notice after 30 days.
BY TREVOR LYMAN

THANK YOU



Shearer Chevrolet

Chuck Williams | 802-651-0238 | chuck@shearervt.com

COLCHESTER SCHOOL

[Fleet] 2019 Chevrolet Silverado 3500HD (CK36003) 4WD Reg Cab 137.5" WB, 59.06" CA

Price Summary

PRICE SUMMARY

	VQ2	MSRP
Base Price	\$34,473.60	\$37,800.00
Total Options	\$1,364.00	\$1,550.00
Vehicle Subtotal	\$35,837.60	\$39,350.00
Adjustments	\$0.00	\$0.00
Destination Charge	\$1,495.00	\$1,495.00
Grand Total	\$37,332.60	\$40,845.00

GAS

(E 8300)



Shearer Chevrolet

Chuck Williams | 802-651-0238 | chuck@shearervt.com

COLCHESTER SCHOOL

[Fleet] 2019 Chevrolet Silverado 3500HD (CK36003) 4WD Reg Cab 137.5" WB, 59.06" CA

Price Summary

PRICE SUMMARY

	VQ2	MSRP
Base Price	\$34,473.60	\$37,800.00
Total Options	\$9,631.60	\$10,945.00
Vehicle Subtotal	\$44,105.20	\$48,745.00
Adjustments	\$0.00	\$0.00
Destination Charge	\$1,495.00	\$1,495.00
Grand Total	\$45,600.20	\$50,240.00

DIESEL

Ⓢ 8300

2018 SIERRA 2500HD 4WD REG CAB /V8G G
 G7C CARDINAL RED R
 H2R JET BLACK / DARK ASH R
 ORDER NO. VTJMXM/TRE STOCK NO. G3624 E
 VIN 1GT 02RE G8 JZ284771 V

MODEL & FACTORY OPTIONS MSRP
 TK25903 SIERRA 2500HD 4WD REG CAB 37700.00 3
 GBH GVW RATING - 9,500 LBS N/C
 GT5 REAR AXLE, 4.10 RATIO N/C
 L96 VORTEC 6.0L V8 SFI GAS ENGINE N/C
 MYD 6-SPEED AUTOMATIC TRANSMISSION N/C
 NE1 50-STATE EMISSIONS N/C
 QXT 17" ALL-TERRAIN BW TIRES 200.00
 VYU SNOW PLOW PREP PACKAGE 385.00
 * POWER FEED FOR BACKUP AND
 ROOF EMERGENCY LIGHT
 * ALTERNATOR, 220 AMP
 * FORWARD LAMP WIRING HARNESS
 * PROVISIONS-ROOF MOUNTED LAMP
 * UNDERBODY SHIELDS
 Z82 TRAILERING EQUIPMENT PKG: 575.00
 *TRAILERING HITCH
 *TRAILER BRAKE CONTROLLER

THIS IS THE ONLY
 3/4-TON I WILL
 AVAILABCE FOR
 ABOUT 6 MONTHS

FLEET PRICE - \$30968.00

ADD PLOW PRICE

TOTAL MODEL & OPTIONS 38860.00 3
 DESTINATION CHARGE 1395.00
 DEALER IMR CONTRIBUTION
 LMA GROUP CONTRIBUTION

TOTAL 40255.00 3
 MEMO: TOTAL LESS HOLDBACK AND
 APPROX WHOLESALE FINANCE CREDIT 3

 INVOICE DOES NOT REFLECT DEALER'S ULTIMATE COS
 REBATES, ALLOWANCES, INCENTIVES, HOLDBACK, FIN
 DEALER OF ADVERTISING MONIES, ALL OF WHICH MAY

SHEARER CHEVROLET BUICK GMC CADILLAC

A/C
 3100
 2610
 23900
 23900
 30700

2030



596 RICHMOND ROAD
HINESBURG, VERMONT 05461
(802) 482-2155
FAX (802) 482-2962

QUOTATION

TRUCK BODIES SALES & SERVICE

- Dump Bodies (Steel & Stainless)
- Stake/Platform Bodies (Steel & Aluminum)
- Forestry - Chip Bodies
- Custom Bodies • Tool Boxes
- Conversion Hoists
- Product Documentation & Layout

NO. 14304



SHEARER CHEVROLET CO INC
PO BOX 566
BURLINGTON, VT 05402
ATTN: CHUCK

MAKE & MODEL	
CHEVROLET 2500	
COLOR:	C.A.:
TRANSMISSION:	

THANK YOU FOR YOUR INQUIRY. WE ARE PLEASED TO OFFER THE FOLLOWING PROPOSAL.

DATE	CUSTOMER PHONE #	YOUR INQUIRY NO. & DATE	F.O.B.	TERMS
07/10/2018	(802) 658-1111	COLCHESTER SCHOOL	HINESBURG, VT	NET 30
QUANTITY	DESCRIPTION		UNIT PRICE	AMOUNT
1	FISHER HD2 SERIES SNOW PLOW SYSTEM			
	8' FT. WIDE			
	MINUTE-MOUNT 2 SYSTEM (SINGLE RELEASE HANDLE			
	ATTACHMENT/DETACHMENT SYSTEM)			
	EXCLUSIVE TRIP EDGE DESIGN.			
	29" MOLDBOARD HEIGHT.			
	HIGH-STRENGTH STEEL MOLDBOARD			
	STORMGUARD BAKED-ON POWDER COAT FINISH.			
	INSTA-ACT 12 VOLT ELECTRIC HYDRAULIC SYSTEM W/MULTI-PLEX TECHNOLOGY			
	(50% FASTER THAN PREVIOUS SYSTEMS)			
	COMPLETE WITH NEW INTENSI-FIRE HEADLIGHTS, CUTTING EDGE,			
	PLOW MARKERS & YOUR CHOICE OF CAB CONTROLS,			
	MOUNTED JOYSTICK OR HAND HELD FISHSTIK.			
	TWO YEAR PARTS AND LABOR WARRANTY			
	** INSTALLED			\$ 4,913.00

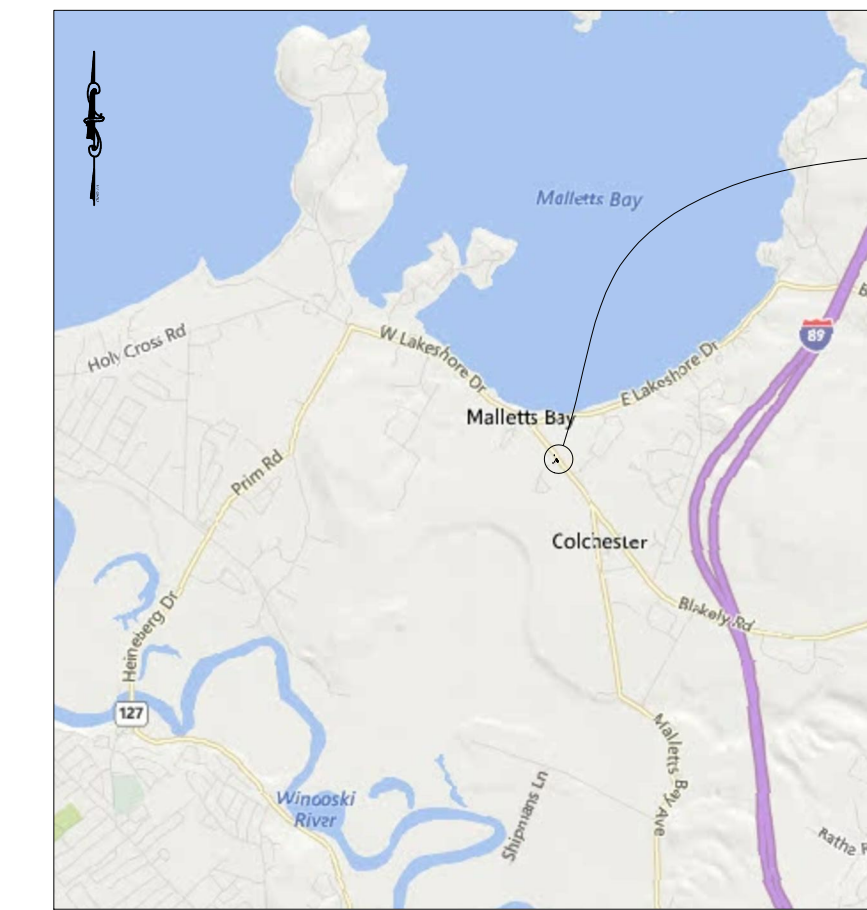
If you require any additional information, please contact us.
Quotation subject to change without notice after 30 days.
BY TREVOR LYMAN

THANK YOU

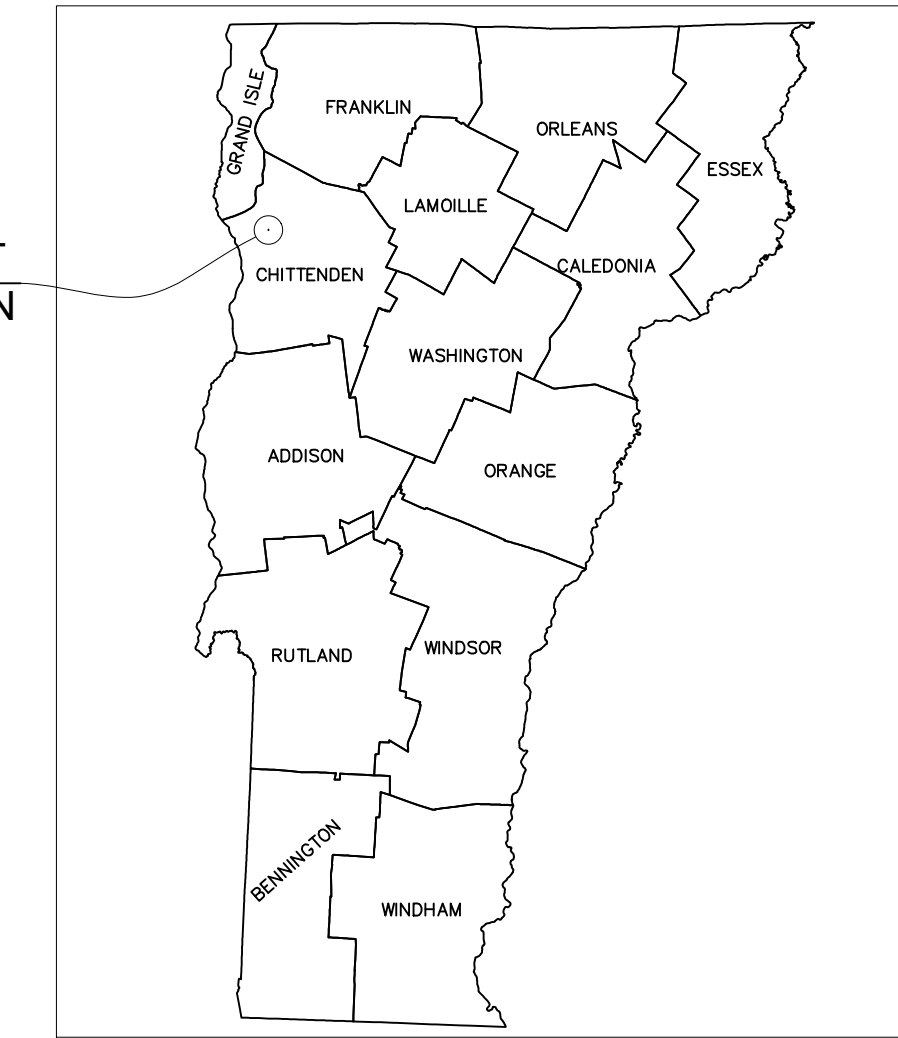
G3624

TOWN OF COLCHESTER COLCHESTER STP 5600(21) VT 127 (BLAKELY ROAD) / LAKER LANE INTERSECTION CHITTENDEN COUNTY

PROJECT LOCATION: VT 127 (BLAKELY ROAD) AND LAKER LANE INTERSECTION, COLCHESTER
 PROJECT LENGTH: ROADWAY LENGTH = 804'(0.152 MI); R.O.W. PROJECT = 715' (0.135 MI)
 SPEED LIMIT: 35 MPH (BLAKELY ROAD)
 DESCRIPTION: WORK TO BE PERFORMED UNDER THIS CONTRACT INCLUDES ROADWAY
 WIDENING TO ACCOMMODATE THE ADDITION OF NEW LEFT AND RIGHT TURN
 LANES FROM BLAKELY ROAD ONTO LAKER LANE AND A RIGHT TURN LANE FROM
 LAKER LANE ONTO BLAKELY ROAD.



PROJECT LOCATION



LOCATION PLAN
NTS



OVERALL PROJECT PLAN
SCALE: 1" = 200'

GENERAL CONSTRUCTION NOTES:

- 1) ALL WORK AND MATERIALS SHALL BE IN ACCORDANCE WITH THE LATEST VERMONT AGENCY OF TRANSPORTATION STANDARD SPECIFICATIONS FOR CONSTRUCTION, 2011, THE MANUAL ON UNIFORM TRAFFIC CONTROL DEVICES (2009 EDITION), AND THESE PLANS.
- 2) THE CONTRACTOR SHALL CONTACT ALL UTILITIES BEFORE EXCAVATION TO VERIFY THE LOCATION OF ANY UNDERGROUND LINES. THE CONTRACTOR SHALL NOTIFY DIGSAFE AND THE TOWN OF COLCHESTER PUBLIC WORKS DEPARTMENT PRIOR TO ANY EXCAVATION.
- 3) ALL UTILITIES SHOWN ON THIS PLAN ARE BASED ON THE BEST AVAILABLE INFORMATION AND ARE APPROXIMATE. THE CONTRACTOR SHALL VERIFY THE EXACT LOCATION OF EXISTING UTILITIES AND SHALL EXCAVATE WITH CAUTION AT ALL TIMES. ANY UTILITIES, PUBLIC OR PRIVATE, DAMAGED OR DISTURBED BY THE CONTRACTOR DURING THE PERFORMANCE OF THE WORK SHALL BE REPAIRED OR REPLACED IN A TIMELY FASHION AT THE EXPENSE OF THE CONTRACTOR.
- 4) THE CONTRACTOR SHALL BE RESPONSIBLE FOR ENSURING THAT THE DUST CREATED AS A RESULT OF CONSTRUCTION DOES NOT CREATE A NUISANCE OR A SAFETY HAZARD. WHERE AND WHEN DEEMED NECESSARY BY THE ENGINEER OR OWNER, THE CONTRACTOR SHALL BE REQUIRED TO WET SECTIONS OF THE CONSTRUCTION AREA WITH WATER OR SWEEP ROADS WITH A POWER BROOM (TYPE 1) AS DUST CONTROL.
- 5) THE CONTRACTOR SHALL INSTALL AND MAINTAIN EROSION PREVENTION AND SEDIMENT CONTROL MEASURES THROUGHOUT THE DURATION OF THE CONSTRUCTION IN ACCORDANCE WITH THE LOW RISK SITE HANDBOOK FOR EROSION PREVENTION AND SEDIMENT CONTROL, LATEST EDITION, AS PUBLISHED BY THE VERMONT DEPARTMENT OF ENVIRONMENTAL CONSERVATION.
 ALL AREAS OF DISTURBANCE SHALL BE STABILIZED WITHIN 14 CALENDAR DAYS OF INITIAL DISTURBANCE. AFTER THIS TIME, ANY DISTURBANCE IN THE AREA MUST BE STABILIZED AT THE END OF EACH WORK DAY UNLESS, WORK IS TO CONTINUE IN THE AREA WITHIN THE NEXT 24 HOURS AND THERE IS NO PRECIPITATION FORECAST FOR THE NEXT 24 HOURS, OR THE WORK IS BEING PERFORMED IN A SELF-CONTAINED EXCAVATION WITH A DEPTH OF 2 FEET OR GREATER (i.e. HOUSE FOUNDATION, UTILITY TRENCHES).
 ALL AREAS OF DISTURBANCE SHALL HAVE PERMANENT STABILIZATION WITHIN 48 HOURS OF REACHING FINAL GRADE.
- 6) CONSTRUCTION OBSERVATION AND CERTIFICATION WILL BE PERFORMED BY THE RESIDENT ENGINEER. DLHCE WAIVES ANY AND ALL RESPONSIBILITY AND LIABILITY FOR PROBLEMS THAT MAY ARISE FROM FAILURE TO FOLLOW THESE PLANS AND SPECIFICATIONS AND THE DESIGN INTENT THAT THEY CONVEY. ANY CHANGES MADE TO THE PLANS AND SPECIFICATIONS, OR IN THE CONSTRUCTION OF THE PROPOSED IMPROVEMENTS WITHOUT DLHCE'S PRIOR KNOWLEDGE AND CONSENT.

NOTES:

1. THESE PLANS ARE SUBJECT TO SUCH ENGINEERING CHANGES AS MAY BE REQUIRED BY THE FEDERAL HIGHWAY ADMINISTRATION OR THE VERMONT AGENCY OF TRANSPORTATION. CONSTRUCTION IS TO BE CARRIED ON IN ACCORDANCE WITH THESE PLANS AND THE VTRANS STANDARD SPECIFICATIONS FOR CONSTRUCTION DATED 2011, AS APPROVED BY THE FEDERAL HIGHWAY ADMINISTRATION ON JULY 20, 2011 FOR USE ON THIS PROJECT INCLUDING ALL SUBSEQUENT REVISIONS AND SUCH REVISED SPECIFICATIONS AND SPECIAL PROVISIONS AS ARE INCORPORATED IN THESE PLANS.
2. THE EXISTING SIDELINES OF BLAKELY ROAD R.O.W. ARE BASED UPON THE FOUND HISTORICAL SURVEY RECORDED IN VOLUME 1, PAGE 132 IN THE COLCHESTER TOWN LAND RECORDS. INDIVIDUAL PROPERTY LINES ARE SHOWN BASED UPON FOUND EVIDENCE AND TOWN PARCEL MAPS.
3. THE BOUNDARY LINES SHOWN ON THESE PLANS SHALL NOT BE USED FOR PURPOSES UNRELATED TO THE TOWN OF COLCHESTER ACQUISITION OF EASEMENTS FOR THE PROJECT.
4. TRAFFIC DATA (VT ROUTE 127 - BLAKELY ROAD)
 2016 ADT = 10,445
 2016 DHV = 1,341
 2016 %T = 6%
 DESIGN SPEED = 35 MPH

THESE PLANS ARE FOR
RIGHT-OF-WAY USE ONLY

RIGHT-OF-WAY PLANS

DECEMBER, 2017

QAP INSPECTION LEVEL 3

SURVEYED BY: MRM/BFD
SURVEY DATE: OCTOBER, 2016

DATUM

VERTICAL: NAVD 88
HORIZONTAL: NAD 83

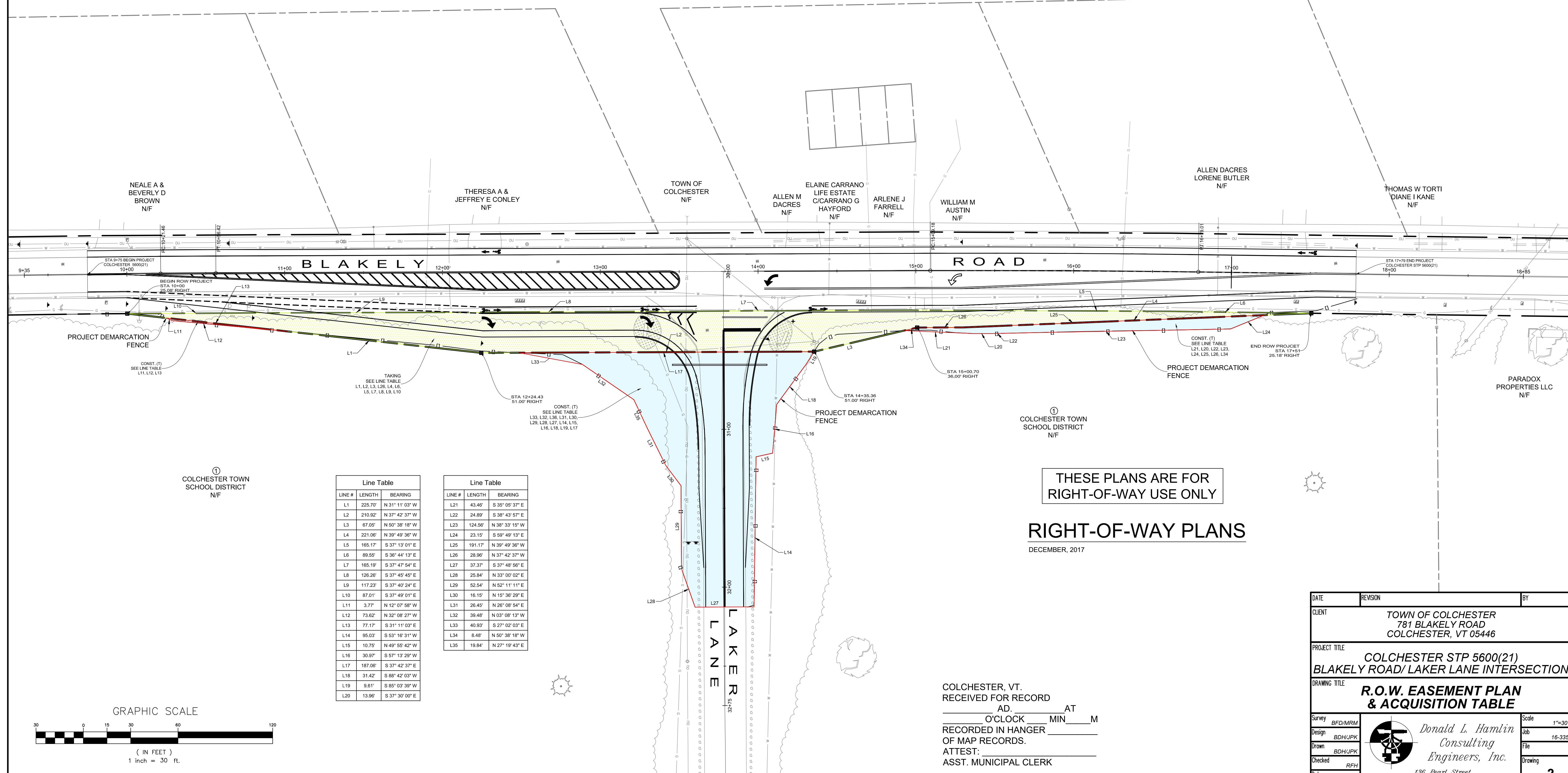
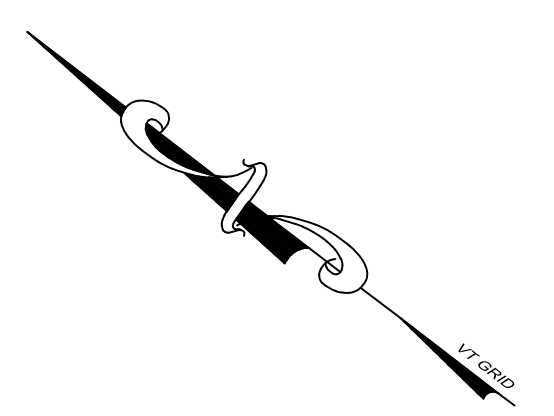
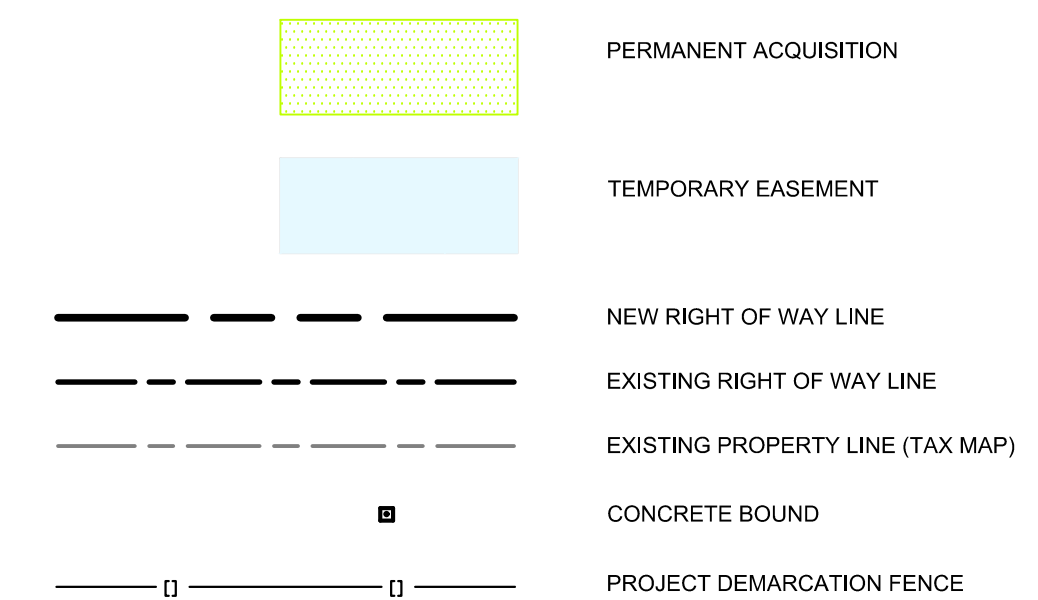
INDEX OF SHEETS

1	TITLE
2	R.O.W. EASEMENT PLAN & ACQUISITION TABLE
3	R.O.W. TYPICAL SECTIONS & DETAILS
4	R.O.W. TYPICAL SECTIONS & DETAILS

COLCHESTER, VT.
RECEIVED FOR RECORD
AD. _____ AT _____
O'CLOCK _____ MIN _____ M
RECORDED IN HANGER _____
OF MAP RECORDS.
ATTEST: _____
ASST. MUNICIPAL CLERK

BLAKELY ROAD/ LAKER LANE INTERSECTION COLCHESTER STP 5600(21)		DLHCE PROJECT NUMBER: 16-335	DRAWING
<p>Donald L. Hamlin Consulting Engineers, Inc. 108 Pearl Street Essex Junction, Vermont</p>	DRAWN BY: JPK/BDH	CHECKED BY: RFH	1

ACQUISITION TABLE										
GRANTOR / OWNER	PARCEL #	EASEMENT / ACQUISITION TYPE	DESCRIPTION	BEGIN STATION	END STATION	AREA (SF)	DATE	TOWN	BOOK	PAGE
COLCHESTER TOWN SCHOOL DISTRICT	①	TEMPORARY CONSTRUCTION	ROADWAY CONSTRUCTION	STA: 10+25 RT	STA: 11+02 RT	47	---	COLCHESTER	---	---
COLCHESTER TOWN SCHOOL DISTRICT	①	TEMPORARY CONSTRUCTION	ROADWAY CONSTRUCTION	STA: 14+92 RT	STA: 17+21 RT	1,300	---	COLCHESTER	---	---
COLCHESTER TOWN SCHOOL DISTRICT	①	TEMPORARY CONSTRUCTION	ROADWAY CONSTRUCTION	STA: 30+51 RT	STA: 32+13 RT	11,275	---	COLCHESTER	---	---
COLCHESTER TOWN SCHOOL DISTRICT	①	FEE SIMPLE	ROADWAY CONSTRUCTION	STA: 10+00 RT	STA: 17+51 RT	11,130	---	COLCHESTER	---	---



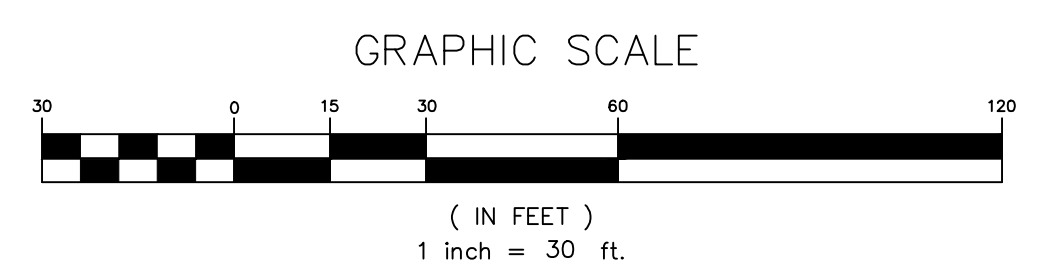
LINE #	LENGTH	BEARING
L1	225.70'	N 31° 11' 03" W
L2	210.92'	N 37° 42' 37" W
L3	67.05'	N 50° 38' 18" W
L4	221.06'	N 39° 49' 36" W
L5	165.17'	S 37° 13' 01" E
L6	89.55'	S 38° 44' 13" E
L7	165.19'	S 37° 47' 54" E
L8	128.26'	S 37° 45' 45" E
L9	117.23'	S 37° 40' 24" E
L10	87.01'	S 37° 49' 01" E
L11	3.77'	N 12° 07' 58" W
L12	73.62'	N 32° 08' 27" W
L13	77.17'	S 31° 11' 03" E
L14	95.03'	S 53° 16' 31" W
L15	10.75'	N 49° 55' 42" W
L16	30.97'	S 57° 13' 29" W
L17	187.00'	S 37° 42' 37" E
L18	31.42'	S 88° 42' 03" W
L19	9.61'	S 85° 03' 39" W
L20	13.98'	S 37° 30' 00" E

LINE #	LENGTH	BEARING
L21	43.46'	S 38° 05' 37" E
L22	24.89'	S 38° 43' 57" E
L23	124.56'	N 38° 33' 15" W
L24	23.15'	S 59° 49' 13" E
L25	191.17'	N 39° 49' 36" W
L26	28.96'	N 37° 42' 37" W
L27	37.37'	S 37° 48' 56" E
L28	25.84'	N 33° 00' 02" E
L29	52.54'	N 52° 11' 11" E
L30	16.15'	N 15° 36' 29" E
L31	26.45'	N 26° 08' 54" E
L32	39.48'	N 03° 08' 13" W
L33	40.93'	S 27° 02' 03" E
L34	8.48'	N 50° 38' 18" W
L35	19.84'	N 27° 19' 43" E

THESE PLANS ARE FOR
RIGHT-OF-WAY USE ONLY

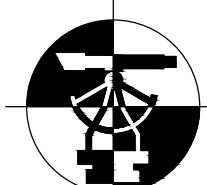
RIGHT-OF-WAY PLANS

DECEMBER, 2017



COLCHESTER, VT.
RECEIVED FOR RECORD
AD. _____ AT _____
O'CLOCK _____ MIN _____ M
RECORDED IN HANGER
OF MAP RECORDS.
ATTEST: _____
ASST. MUNICIPAL CLERK

DATE	REVISION	BY
CLIENT TOWN OF COLCHESTER 781 BLAKELY ROAD COLCHESTER, VT 05446		
PROJECT TITLE COLCHESTER STP 5600(21) BLAKELY ROAD/LAKER LANE INTERSECTION		
DRAWING TITLE R.O.W. EASEMENT PLAN & ACQUISITION TABLE		
Survey	BFD/MRM	Scale 1"=30'
Design	BDH/JPK	Job 16-335
Drawn	BDH/JPK	File
Checked	RFH	Drawing
Date	08/10/2017	2



Donald L. Hamlin
Consulting
Engineers, Inc.
136 Pearl Street
Essex Junction, Vermont

COLCHESTER SCHOOL DISTRICT

POLICY: STUDENT CONDUCT AND DISCIPLINE

DATE ADOPTED: DRAFT

POLICY

It is the policy of the Colchester School District to maintain schools which provide a safe, orderly, civil and positive learning environment, each with a system of classroom and school management practices with underlying, clear and fair disciplinary procedures and consequences, that will ensure that are free from harassment, bullying, hazing, and other rule-breaking and/or disruptive misconduct. Rules regarding student behavior should be clearly stated, understood and accepted by students and staff; communicated clearly to parents of enrolled students; and implemented in compliance with due process requirements.

Definitions

1. **School** means any setting which is under the control and supervision of the School District. It includes school grounds, facilities, and school sponsored events and activities held on or off school grounds. The definition of school also includes vehicles used to transport students to and from school or school sponsored events and activities.
2. **Expelled** means the termination of educational services for the remainder of the school year or up to 90 school days, whichever is longer.
3. **In-School Suspension** means the exclusion within the school building of a student from the student's regular education program for up to but not more than 10 school days for disciplinary reasons.
4. **Out-of-School Suspension** means the removal of a student from the school building and from the student's regular education program for up to but not more than 10 school days for disciplinary reasons.

STUDENT RESPONSIBILITIES

Each student has the responsibility of contributing to a civil, safe and productive learning environment, showing respect and consideration for other students and adults and the maintenance of a respectful school community. This responsibility includes obeying all school rules, complying with all school policies, and responding to any related inquiries with honesty and integrity. The act of giving false information to a staff member, teacher, or administrator, including academic dishonesty, or knowingly providing false or misleading information regarding one's own conduct, or the conduct of other students, may serve as an independent basis for disciplinary referral.

PARENT RESPONSIBILITIES

Last Adopted:	May 3, 2005
Date Warned:	September 3, 2010
First Reading:	September 7, 2010
Second Reading:	October 5, 2010
Third Reading:	November 16, 2010

As members of the school community, parents of students are asked to share the students' and school staff's responsibilities for maintaining this learning environment, by reinforcing and modeling for their children the importance of respectful behavior toward others and of compliance with school rules.

ADMINISTRATIVE RESPONSIBILITIES

The Principal of each school in the District shall, in consultation with the educational staff, develop a "comprehensive plan for responding to student misbehavior" in compliance with 16 V.S.A. §1161a. The Comprehensive Plan shall, to the extent appropriate, promote positive development of youth, and shall address each of the seven elements outlined in §1161a (a).

Each school shall post its Comprehensive Plan on the District's website as well as in the school office, in a place that is visible to students, parents and the public and shall publish the Plan in the school's Student Handbook or other similar publication, and the Plan shall be distributed to all students enrolled at the school, and their parents. The Plan may be provided to parents in the Student Handbook or by other means at the discretion of the Principal, and the Principal.

At the beginning of each school year, the school shall review with all students in attendance those portions of the Plan that address the school's rules describing what constitutes misconduct; disciplinary consequences for misconduct; and the school's due process procedures for imposition of discipline, including short and long term suspensions and expulsion. In addition to other types of misconduct, this review shall include a review of what constitutes harassment, hazing and bullying, and the consequences for engaging in such misconduct.

Coordination of Policies, Plans and Procedures. No school's Plan shall conflict with this policy, and this policy and each school Plan shall be read in conjunction with and shall not conflict with, the following additional related District Policies: Weapons; Hazing; Prevention of Harassment; Bullying Prevention; Restrictive Behavioral Intervention; Corporal Punishment; Threats and Disruptions of School Operations; Alcohol, Tobacco and Other Drug Abuse; Smoking in School Buildings and/or on Grounds; and Student Suspension and Expulsion.

Applicable State Statute and Rules. Suspension and expulsion of students shall be imposed in accordance with State statutory requirements (16 V.S.A. §§1162-1163), and in compliance with suspension and expulsion Rule 4311. In addition, Section 504 students shall receive the additional protections of Rule 4312, and special education students shall receive the additional protections of Rule 4313. Copies of these three Rules shall be available for review in each school office upon request, and copies thereof shall be provided to a student or parent of a student in attendance, upon request.

Effective Date. This policy becomes effective once approved. Each school is then required to notify families and students when policies are updated. School are also required to bring their Comprehensive Plans, school rules and other relevant school publications into compliance with this policy.

Legal Reference(s):

16 V.S.A. § 1161a -1163

20 U.S.C. §§ 1400 et seq.

Vermont State Board of Education Manual of Rules & Practices 4312, 4313, 2020.8.12

COLCHESTER SCHOOL DISTRICT

POLICY: STUDENT SUSPENSION

DATE ADOPTED: DRAFT

POLICY STATEMENT

Suspension separates the student from school for a specified period of time, e.g., four hours, four days, etc., for disciplinary reasons. Administrative restriction is not considered a short-term suspension. Suspension may be imposed only by the principal, assistant principal, the Superintendent or his/her designee, or, in cases of long-suspension the Colchester School Board. When disciplining disabled students (or those suspected of being disabled) the District shall comply with all state and federal laws.

Definitions

1. **School** means any setting which is under the control and supervision of the School District. It includes school grounds, facilities, and school sponsored events and activities held on or off school grounds. The definition of school also includes vehicles used to transport students to and from school or school sponsored events and activities.
2. **Expelled** means the termination of educational services for the remainder of the school year or up to 90 school days, whichever is longer.
3. **In-School Suspension** means the exclusion within the school building of a student from the student's regular education program for up to but not more than 10 school days for disciplinary reasons.
4. **Out-of-School Suspension** means the removal of a student from the school building and from the student's regular education program for up to but not more than 10 school days for disciplinary reasons.

SHORT-TERM SUSPENSIONS

Short-term suspension separates a student from school for a period of time that is up to but not more than 10 school days for disciplinary reasons. With but one exception, in all cases of suspension from school the students and his/her parent or guardian shall be given an opportunity for an informal hearing before an appropriately designated school administrator. The exception involves a student who, because of his or her conduct or condition, is an immediate threat to himself or herself, to others, to property or to the educational environment. In this instance the school administrator may take whatever action is appropriate under the circumstances including but not limited to immediate suspension pending a hearing within the next four (4) succeeding school days. Except as noted in the preceding sentence, the informal hearing must precede the suspension. At the informal hearing, the school administrator shall provide, either orally or in writing, the following:

Date Warned: March 4, 2005
 First Reading: March 8, 2005
 Second Reading: March 29, 2005

- Notice of the charge(s);
- Explanation of the evidence against him or her;
- Opportunity for the student to tell his or her side of the story; and
- His or her decision on the matter.

Immediately following the informal hearing, the student's parent(s) or guardian, or the student himself or herself if over the age of 18, shall be notified in writing of any decision to suspend. All suspensions shall be reported to the Superintendent immediately. With respect to students eligible for special education, parents shall also be notified with a copy of Parents' Rights in Special Education, Procedural Safeguards Notice.

There shall be no formal appeal of suspension, but a student or his/her parent(s) or guardian may request the Superintendent review a suspension. The suspension shall not automatically be delayed pending any review, however, unless so ordered at the discretion of the Superintendent.

LONG-TERM SUSPENSIONS

Long-term suspension separates a student from school for a period of time that is more than ten (10) consecutive school days and up to the remainder of the school year, for misconduct when the misconduct makes the continued presence of the student harmful to the welfare of the school. Only the Colchester School Board has the authority to impose a long-term suspension, following a formal hearing before the school board with prior notice to and an opportunity to attend by the student and his or her parent(s) or guardian. The Colchester School District shall follow these steps prior to the formal hearing.

- A written recommendation for long-term suspension shall be prepared by the principal or the Superintendent or his/her designee. It shall contain a full statement of the grounds on which the recommendation is made and a summary of the evidence against the student. It shall be sent to the Chair of the School Board and to the Superintendent.
- A formal hearing shall be scheduled before the Colchester School Board to be conducted in accordance with *Colchester School District* procedure, i.e., the *Procedure for the Hearing Process in a Long-Term Suspension of a Student*.
- Before the formal hearing, the following information shall be sent by certified mail to the home address of the student and his/her parent(s) or guardian:
 - a. The written recommendation for the long-term suspension of the student.
 - b. A notice of hearing stating the date, time, and place of the scheduled hearing.
 - c. A copy of the *Colchester School District Procedure for the Hearing Process in a Long-Term Suspension of a Student*.
 - d. The nature of the charges including notice of which policy was violated.
 - e. Notice that the student has the right to legal representation at the hearing.
 - f. Notice that the student has the right at the hearing to present evidence.
 - g. Notice that the student has the right at the hearing to cross-examine witnesses.

- h. The name and phone number of a school administrator to be contacted in case there are questions.
- i. With respect to students eligible for special education, parents shall also be provided a copy of Parents' Rights in Special Education, Procedural Safeguards Notice.

COMPULSORY ATTENDANCE DURING SUSPENSION OR EXPULSION

During any period of suspension or expulsion imposed by the School District, neither a student nor their parent/guardian shall be subject to compulsory attendance requirements unless the conditions of suspension or expulsion include participation in a program in the school or an alternative program outside the school.

TRANSFER OF SUSPENSION OR EXPULSION TO OTHER SCHOOLS

If an expelled or suspended student transfers into Colchester School District from a Vermont public or independent school, then upon application by the student and after a review of whether the school can provide the student with appropriate services, the School District may choose to continue the suspension or expulsion imposed by the original school.

Legal Reference(s):

16 V.S.A. § 1161a -1163

20 U.S.C. §§ 1400 et seq.

29 U.S.C. §794

Vermont State Board of Education Manual of Rules & Practices 4312, 4313, 2020.8.12

**PROCEDURE: PROCEDURE FOR THE HEARING PROCESS IN A
LONG-TERM SUSPENSION OF A STUDENT**

HEARING:

- A. A quorum of the School Board must be present.
- B. The Chair of the Colchester School Board will meet with the student. The Chair will explain to the accused and/or his or her parent(s) and/or his or her counsel the procedure that will be followed.
- C. Those present shall be School Board members, the accused, the principal or designee who will present the administration's case, and a representative of the Superintendent's office. The accused and/or the School Board may elect to have counsel. The accused may be accompanied by his/her parent(s) or legal guardian. Witnesses will be present when called upon by the Chair. Only witnesses who have something material to contribute to the case will be allowed. Personal character witnesses may be allowed if approved by the School Board following the presentation of the case.
- D. The Superintendent or designee will supply all School Board members, the accused, his/her counsel and/or parent(s) or guardian, with copies of the following documentation:
 1. Written statement of the grounds on which the recommendation is made and a brief summary of the evidence against the student.
 2. Any police report expected to be furnished to the School Board at the hearing.
 3. Summary of past disciplinary actions of record involving the accused student.
- E. The Chair shall see that the following procedure is followed:
 1. Give time, date, place, people in attendance.
 2. Request a reading of the statement of grounds on which the recommendation for a long-term suspension is made.
 3. Ensure that the School Board members and accused understand the grounds for the recommendation for a long-term suspension.
 4. Request that the principal or designee present his/her case. The principal or designee will do so by calling witnesses and presenting evidence. At this time, Board members and administration will be allowed to question witnesses.
 5. The student/parent/representative may then ask questions of witnesses.

6. The student or his or her agent may then present his or her side of the case and call witnesses and present evidence. Witnesses may be examined by the accused and by the School Board.
 7. The Administration may then ask questions of the witnesses.
 8. At the close of evidence the Chair shall announce that the School Board is going into deliberative session. Prior to going into deliberation the School Board shall ask for a recommendation from the administration. The Chair may also receive recommendations from the accused and/or his or her parent(s) and/or his or her counsel. After receiving these recommendations, the Chair will clear the hearing room except for the School Board and counsel to the School Board. Deliberations shall begin.
- F. In making its final decision, the School Board reserves the right to accept the recommendation for long-term suspension, reject it, or impose a different sanction as it deems necessary for the benefit of the accused and/or the entire student body. Options of the School Board may include but are not necessarily limited to long-term suspension, short-term suspension, or other sanctions, all as defined by School Board policy.

The School Board may impose long term suspension or expulsion while offering a student an earlier return to school, conditioned upon his/her cooperation in participating in counseling, a threat assessment, or other specialized program designed to meet his/her particular needs. Such a program shall be designed by administrative officers and/or faculty members of the school and shall be approved by the principal. The cost of any counseling or other specialized services shall be borne by the student, subject to Child Find obligations imposed under state and federal disability law.

Post-Hearing

- A. If after reasonable time the School Board has not made its decision, the Chair will inform those waiting for the decision that a decision will be forthcoming and set a specific date and time to give the decision to the accused. Said date shall be no later than five school days after the date of the hearing, or ten calendar days, whichever comes sooner.
- B. The Superintendent will prepare a letter notifying the accused and parent(s) and/or legal guardian of the decision of the School Board.
- C. Copies of recording and/or documentary evidence will be made available upon request, at cost, to the accused, or his/her parent(s), guardian and/or counsel.

COLCHESTER SCHOOL DISTRICT**POLICY: SCHOOL SEARCH AND SEIZURE POLICY****DATE ADOPTED:** November 3, 1999**POLICY STATEMENT**

To maintain order and discipline in the schools and to protect the safety and welfare of students and school personnel, school authorities may search a student, student lockers or student automobiles under the circumstances outlined below and may seize any illegal, unauthorized or contraband materials discovered in the search.

PROCEDURAL GUIDELINES

1. **Personal Searches:** A student's person and/or personal effects (e.g., purse, book bag, etc.) may be searched whenever a school authority has reasonable suspicion to believe that the student is in possession of illegal or unauthorized materials.

If a pat down search of a student's person is conducted it will be conducted in private by a school official of the same sex and with an adult witness present, when feasible.

If extreme emergency conditions require a more intrusive search of a student's person, such a search may only be conducted in private by a school official of the same sex, with an adult witness of the same sex present, and only upon the prior approval of the principal or assistant principal or one of their superiors, unless the health or safety of students will be endangered by the delay which might be caused by following these procedures.

2. **Locker Searches:** Student lockers are school property and remain at all times under the control of the school; however, students are expected to assume full responsibility for the security of their lockers. Periodic general inspections of lockers may be conducted by school authorities for any reason at any time without notice, without student consent, and without a search warrant.
3. **Automobile Searches:** Students are permitted to park on school premises as a matter of privilege, not of right. The school retains authority to conduct routine patrols of student parking lots and inspections of the exteriors of student automobiles on school property. The interiors of student vehicles may be inspected whenever a school authority has reasonable suspicion to believe that illegal or unauthorized materials are contained inside. Such patrols and inspections may be conducted without notice, without student consent, and without a search warrant.
4. **Seizure of Illegal Materials:** If a properly conducted search yields illegal or contraband materials, such findings shall be turned over to proper legal authorities for ultimate disposition.

Date Warned: October 15, 1999
First Reading: October 20, 1999
Second Reading: November 3, 1999
Last Reviewed: November 5, 2002

PERSONNEL CONSENT AGENDA

Board Date: July 17, 2018

Licensed Employees (Teacher/Administrator)

Contract Type	First Name	Last Name	Category	Position	FTE/Hours	Building	Agenda Information	Person Replacing	Budgeted	Admin Support

Non-Licensed Employees (Support Staff), *Informational*

Contract Type	First Name	Last Name	Category	Position	FTE/Hours	Building	Agenda Information	Person Replacing	Budgeted	Admin Support
Co-Curricular	Mei	Endo	New Hire	Music Director/Drama Accompanist		CHS	Notice of Hire	Melissa Towle	Yes	Yes
Co-Curricular	Julie	Wockenfuss	New Hire	"A" Field Hockey Coach		CMS	Notice of Hire	Gabrielle Blow	Yes	Yes
Support Staff	Megan	Cobaugh	New Hire	Paraeducator - Special Education	32.5 hr	CMS	Notice of Hire	Donna Barcomb	Yes	Yes
Support Staff	Nicole	DeOrsey	New Hire	Paraeducator	32.5 hr	UMS	Notice of Hire	Sophia Adams	Yes	Yes
Support Staff	Molly	Finnigan	End of Employment	Autism Interventionist	35.0 hr	MBS	Notice of End of Employment			Yes
Support Staff	Nichole	FitzGerald	New Hire	Paraeducator - Special Education	32.5 hr	UMS	Notice of Hire	Brittany Moore	Yes	Yes
Support Staff	Anila	Lawrence	New Hire	Paraeducator/Paraeducator-Special Education	16.25/16.25	PPS	Notice of Hire	Amy Wagoner	Yes	Yes
Support Staff	Roseann	Martin	New Hire	Paraeducator-Special Education	32.5 hr	CMS	Notice of Hire	Emily Sikorski	Yes	Yes
Support Staff	Gordon	McCuin	End of Employment	Lead Custodian	40.0 hr	UMS	Notice of End of Employment			Yes
Support Staff	Crystal	Nerbak	New Hire	Autism Interventionist	35.0 hr	PPS	Notice of Hire	Katy Hannah	Yes	Yes
Support Staff	Gabrielle	Roberts	End of Employment	Paraeducator - Special Education	32.5 hr	UMS	Notice of End of Employment			Yes
Support Staff	Doris	Trainque	End of Employment	Food Service Worker	30.5 hr	MBS	Notice of End of Employment			Yes
Support Staff	Amy	Wagoner	End of Employment	Paraeducator/Paraeducator-Special Education	16.25 hr/16.25 hr	PPS	Notice of End of Employment			Yes

COLCHESTER SCHOOL DISTRICT

Board of Education Meeting
Colchester High School Media Center

Tuesday, June 19, 2018
7:00 p.m. (General Session)

MINUTES (General Session)

The Colchester Board of Education held a regular board meeting on Tuesday, June 5, 2018, at the Colchester High School Media Center. Those in attendance were Board Chair Mike Rogers; Directors: Craig Kieny, Curt Taylor and Lincoln White; Superintendent Amy Minor; Business and Operations Manager George Trieb; Director of Special Education Carrie Lutz; Director of Curriculum and Instruction Gwen Carmolli.

There was one audience member.

I. Call to Order and Pledge of Allegiance

Director Rogers called the meeting to order at 7:00 p.m.

II. Citizen Participation

None

III. Food Services Presentation

Information

Business and Operations Manager George Trieb started the presentation by reminding the board that they had requested to be informed prior to budget season if it might be necessary to help the food program financially. This year the food service program is asking that the board designate \$100,000.00 to upgrade the current CHS Food Service line to make it more efficient to students. He also explained that food service is losing money annually due to high food prices. He does not recommended raising the lunch prices since we are already one of the highest in Chittenden County. He would like to recommend that the board have a food service line item in future budgets to ensure that the program is not running in the red.

Director Rogers suggested that the Food Service Director come up with a list of items necessary each year to continue upgrading the current systems that are already in place. Business and Operations Manager Trieb said that he will have a more accurate estimate on the financial needs of the program in October or November. At that time he will make a recommendation for the food service line item for the next year's budget.

IV. Decision regarding the Municipal Sewer Project

Action

Colchester's Director of Public Works Bryan Osborne presented information on the town's proposed Municipal Sewer Project at the May 15th school board meeting. A discussion was had at that meeting as well as the meeting on June 5th. At both meetings, the school board allowed citizen input. The board continued to discuss but ultimately came to the decision that it would be much more costly for the school district to be a part of this program. The Superintendent will inform the town of the board's decision not to participate.

Director White moved to authorize the Superintendent of Schools to notify the town that we will not be participating in the municipal sewer project as presented, seconded by Director Kieny. The motion passed unanimously, 4-0.

V. Tuition Agreement for 2018-2019 with Grand Isle School District Action

Superintendent Minor announced that South Burlington, Essex and Colchester Superintendents have been approached by Don Van Nostrand the Superintendent of the Grand Isle School District. The Grand Isle School District is requesting that we enter into a one year modified tuition agreement of \$4,000.00 per pupil for the first year and normal tuition for the following years. The Grand Isle School District will be eliminating grades seven and eight beginning in the year 2019-2020. In order to lessen the amount of transitions a student would have to incur they would like to allow 7th grade students to present a proposal to the Grand Isle School Board requesting they be able to attend any one of these schools. If the Grand Isle School Board approves, it would then be up to the receiving school to accept individual students. Currently CMS 7th grade classrooms are at 26/27 students per classroom. Superintendent Minor stated she would monitor the enrollment to ensure that class sizes did not exceed 28. She also explained that if we say no to this proposal it could mean reduced revenues in the future if Grand Isle students end up attending other districts.

During the meeting, Superintendent Minor stated that Colchester would get the ADM for these students. Please note it was clarified after the meeting that the funding would be consistent with what occurs for all tuition students as the Grand Isle School District will keep the ADM for each student. Colchester will receive the \$4,000.00 in tuition for each student. The benefit for Colchester would be the additional tuition dollars for each student at the regular announced rates as the student moves through grades 8-12. Not participating in this agreement would result in a potential for less revenue as these students will select another district.

Director Kieny moved to authorize the Superintendent to enter into an agreement with the Grand Isle School District to offer reduced tuition for students in grade 7 for the 2018-2019 school year as presented, seconded by Director Taylor. The motion passed unanimously, 4-0.

VI. Approval of Tax Anticipation Note Action

Business and Operations Manager George Trieb presented the cash flow analysis that explains the necessity for a Tax Anticipation Note. It is necessary every year to borrow money in order to start the next fiscal year, until our revenue arrives from the state.

Director White moved to approve the Tax Anticipation Note for the Colchester School District as recommended by the business manager, seconded by Director Kieny. The motion passed unanimously, 4-0.

VII. Approval of Second Reading of Corporal Punishment Policy Action

There were no changes to this policy since the last meeting.

Director Kieny moved to approve the second reading of the Corporal Punishment Policy: F28, seconded by Director Taylor. The motion passed unanimously, 4-0.

VIII. Approval of Second Reading of Student Conduct and Discipline Policy **Action**

Director Taylor questioned the definition of School. He feels that “in vehicles” does not belong in the definition of school. Superintendent Minor explained that “school” pertains to any place a student is during school hours or during a school event. Sometimes the district has to transport students to and from some place and that means that in the vehicle is still considered school. The board decided to bring it back for a third reading. Superintendent Minor will also make a few other minor adjustments to some of the wording.

Director Kiemy moved to approve the second reading of the Student Conduct and Discipline Policy: F1, seconded by Director Taylor. The motion passed unanimously, 4-0.

IX. Approval of Second Reading of Student Suspension Policy **Action**

This policy also has the same definition of school so the school board requested that this also come back for a third reading.

Director White moved to approve the second reading of the Student Suspension Policy: F33, seconded by Director Taylor. The motion passed unanimously, 4-0.

X. Approval of First Reading of Threats and Disruptions to School Operations Policy **Action**

Superintendent Minor explained that this policy has been drafted for school board review by Colchester School District’s attorney. This attorney is the same attorney that drafts the policies for the Vermont School Boards Association. Currently the Vermont School Boards Association is in the process of revising all of the discipline policies and we are the first school district to review them. Superintendent Minor stated that the procedures would not be a part of the policy.

Director Taylor moved to approve the first reading of the Threats and Disruptions to School Operations Policy: F7, seconded by Director Kiemy. The motion passed unanimously, 4-0.

XI. Approval of First Reading of School Search and Seizure Policy **Action**

Superintendent Minor stated that although this policy was adopted in 1999 it has served Colchester schools well and there are no recommended changes.

Director Taylor moved to approve the first reading of the School Search and Seizure Policy: F4, seconded by Director Kiemy. The motion passed unanimously, 4-0.

XII. Approval of Personnel Consent Agenda **Action**

Superintendent Minor reviewed the Personal Consent Agenda. She stated that MBS is still in the process of hiring and still needs one 5th grade teacher.

PERSONNEL CONSENT AGENDA

Board Date: June 19, 2018

Licensed Employees (Teacher/Administrator)

Contract Type	First Name	Last Name	Category	Position	FTE/Hours	Building	Agenda Information	Person Replacing	Budgeted	Admin Support
Teacher	Hilary	Carter	New Hire	TIPS Teacher, One-Year Only	0.2 FTE	CHS	Request to Hire	Patricia Schiller	Yes	Yes

Non-Licensed Employees (Support Staff), Informational

Contract Type	First Name	Last Name	Category	Position	FTE/Hours	Building	Agenda Information	Person Replacing	Budgeted	Admin Support
Support Staff	Sophia	Adams	End of Employment	Paraeducator	32.5 hr	UMS	Notice of End of Employment			Yes
Support Staff	Donnalee	Barcomb	End of Employment	Paraeducator - Special Education	32.5 hr	CMS	Notice of End of Employment			Yes
Support Staff	Donnalee	Barcomb	End of Employment	Non-Instructional Aide - Breakfast	3.5 hr	CMS	Notice of End of Employment			Yes
Support Staff	Danielle	Cote	End of Employment	Paraeducator - Special Education	32.5 hr	CMS	Notice of End of Employment			Yes
Support Staff	Katy	Hannah	End of Employment	Behavior Interventionist	40.0 hr	PPS	Notice of End of Employment			Yes
Support Staff	Emily	McFadden	End of Employment	Behavior Interventionist	40.0 hr	MBS	Notice of End of Employment			Yes
Support Staff	Tamara	Meyer	End of Employment	Food Service Worker	21.25 hr	CHS	Notice of End of Employment			Yes
Support Staff	Ruth	Quintin	End of Employment	Head Cook	27.5 hr	CMS	Notice of End of Employment			Yes
Support Staff	Emily	Sikorski	End of Employment	Paraeducator - Special Education	32.5 hr	CMS	Notice of End of Employment			Yes

Director White moved to approve the personnel consent agenda as provided, seconded by Director Kienny. The motion was approved unanimously 4-0.

XIII. Approval of Minutes: June 5, 2018 Action

Director Taylor moved to approve the minutes from the meeting held on June 5, 2018, seconded by Director Kienny. The motion was passed unanimously 4-0.

XIV. Board/Administration Communication, Correspondence, Committee Reports Information

- Bussing and Private Roads Update - This affects 151 families in Colchester. The Colchester Select board met last week and worked with Mountain Transit to plow to a certain point on a few of the private roads in order for busses to get within one mile of a student's home.
- CMS and CHS Graduations were very successful.

XV. Possible Future Agenda Items Information

July 17:

- Boilers Purchase
- CHS Trip to France
- Purchase of new truck
- Financial Policies
- Discipline Policies

Future Meetings:

- Upcoming Policy Work (Discipline: F7, F9, F3, F4)
- Upcoming Financial Policy Work (E10, D10, H3, H4)
- Innovation in Education Presentations

- Laker Learning Lab at CHS
- Proficiency Based Learning at CHS

XVI. Executive Session

Information

Director White moved to enter executive session at 8:28 p.m. to discuss the business manager's evaluation and negotiations for teachers and support staff as permitted by Vermont Statue: Title One, Section 313, seconded by Director Kieny. The motion passed unanimously 4-0.

Director Kieny motioned to exit executive session at 9:40 p.m., seconded by Director Taylor. The motion passed unanimously 4-0.

XVII. Adjournment

Director White motioned to adjourn the meeting at 9:41 p.m., seconded by Director Taylor. The motion passed unanimously 4-0.

Recorder:

Board Clerk:

Patty Ward
Recording Secretary

Craig Kieny
Board Clerk