

Hand Washing

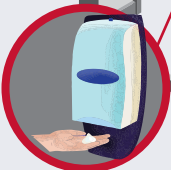
Establish hand washing routines

Air and Surface Mitigation

Comply with CDC filtration recommendations for HVAC.

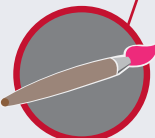
Signage

Signage will be used to remind students and staff of hygiene practices



Hand Sanitizing Stations

Hand sanitizing stations are available in all classrooms and entry ways, dispensers are antimicrobial



Specials

Some specials and unified arts may be taught in classrooms

Physical Distancing

Desk and tables will be spaced to accommodate as much physical distancing as possible



Students

Classrooms will limit shared materials, objects, and supplies

Staff

Staff will receive professional development re COVID symptoms, mitigation, and virtual/remote learning, and complete a declaration acknowledging their role in monitoring their symptoms

Plexiglass Sneeze Guard

Placed in areas throughout some classrooms

Lunch

Individually-packed meals will be served in classrooms



Full-time Remote/Virtual Learning

CSD will offer remote universal online instruction for students who opt in

Additional Sanitization Procedures

High touch areas including desk, lights, door knobs will be sanitized nightly

Reopening Colchester Schools

Additional Mitigation Measures

Including virtual field trips, limit number of visitors, and no large assemblies



Water Fountains Decommissioned

Bottle filling will be available



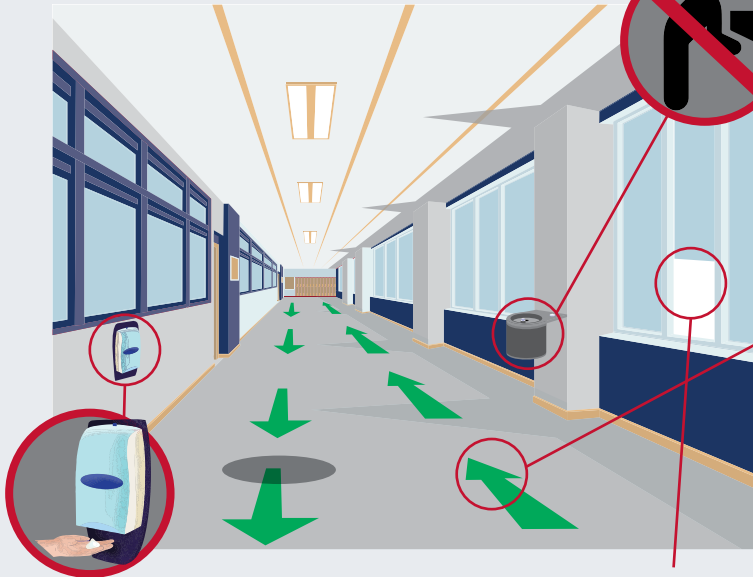
Reduce Congregation

In various areas such as: cafeteria, recess, main office, health room and the use of lockers, library, and restrooms



Controlled Traffic Patterns

Maintain physical distance between students and staff



Hand Sanitizing Stations

Hand sanitizing stations are available in all classrooms and entry ways; dispensers are antimicrobial



Windows

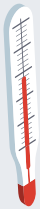
Increase fresh air circulation when feasible

Outdoor Spaces

Utilize for learning where appropriate, including music and physical education

Health Checks

Students and staff will complete a daily health check, including temperature checks



Medical Waiting Rooms

Available for individuals who may be displaying symptoms while waiting for pickup



School Bus

Provide assigned seats and coordinate on-boarding of buses and release of students to reduce congregating; buses will be cleaned and disinfected before and after every route

Multiple Entry Points

Where feasible to reduce bottlenecks

Plexiglass Sneeze Guard

Placed in high traffic areas such as front offices

Face Coverings

The governor has mandated the wearing of face coverings. All students and employees will be wearing face coverings.



LEARN MORE: csdvt.org/covid19



Created using the AOE's guidance: A Strong and Healthy Start